



# Introduction of HBase

---

Original Slides By: Hu Yi

2009-3-11

# Overview



- HBase is an Apache open source project whose goal is to provide storage for the Hadoop Distributed Computing Environment.
- Data is logically organized into tables, rows and columns.

# Outline



- **Data Model**
- Architecture and Implementation

# Conceptual View

<family>:<label>

- A data row has a sortable row key and an arbitrary number of columns.
- A Time Stamp is designated automatically if not artificially.
- <family>:<label>

| Row key          | Time Stamp | Column "contents:" | Column "anchor:"        |           |
|------------------|------------|--------------------|-------------------------|-----------|
| "com.apache.www" | t12        | "<html>..."        |                         |           |
|                  | t11        | "<html>..."        |                         |           |
|                  | t10        |                    | "anchor:apache.com"     | "APACHE"  |
| "com.cnn.www"    | t15        |                    | "anchor:cnnsi.com"      | "CNN"     |
|                  | t13        |                    | "anchor:my.look.c<br>a" | "CNN.com" |
|                  | t6         | "<html>..."        |                         |           |
|                  | t5         | "<html>..."        |                         |           |
|                  | t3         | "<html>..."        |                         |           |

# Row Ranges:

- Row key/ Column Timestamp desc
- Physically, table into row ranges from start-key to

| Row key | Time Stamp | Column "contents:" | Column "anchor:" |       |
|---------|------------|--------------------|------------------|-------|
| aaaa    | t15        |                    | anchor:cc        | value |
|         | t13        | ba                 |                  |       |
|         | t12        | bb                 |                  |       |
|         | t11        |                    | anchor:cd        | value |
|         | t10        | bc                 |                  |       |
| aaab    | t14        |                    |                  |       |
| aaac    |            |                    | anchor:be        | value |
| aaad    |            |                    | anchor:ad        | value |
| aaae    | t5         | ae                 |                  |       |
|         | t3         | af                 |                  |       |

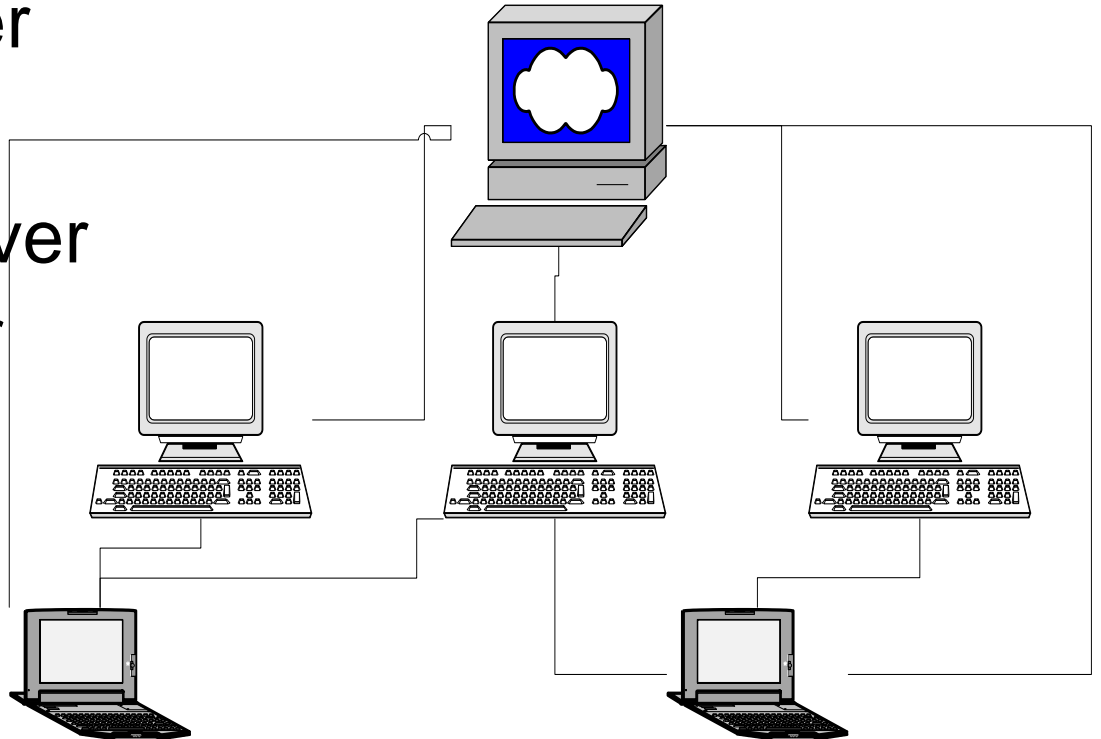
# Outline



- Data Model
- **Architecture and Implementation**

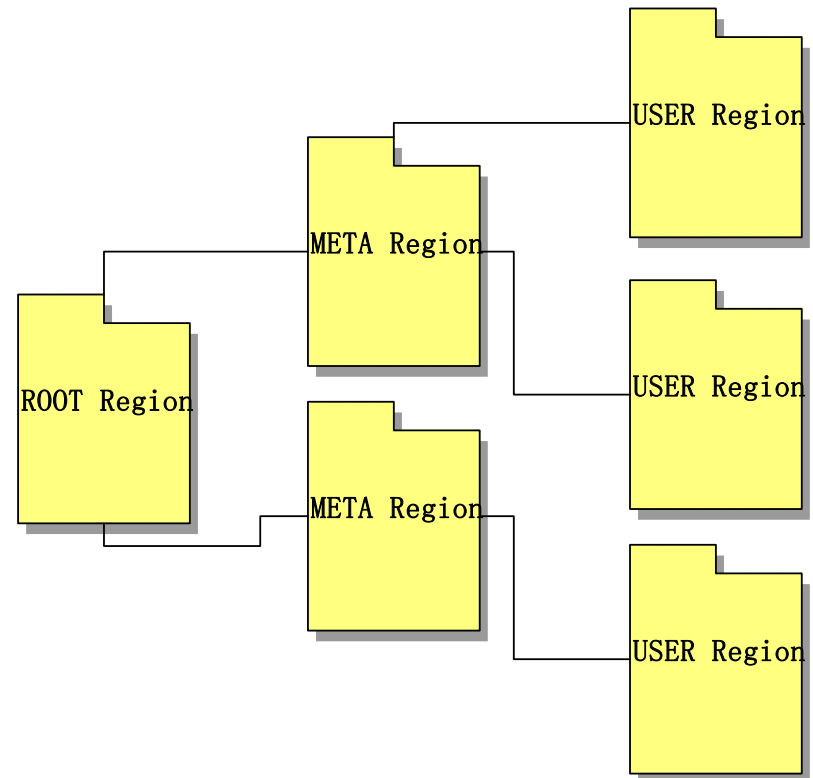
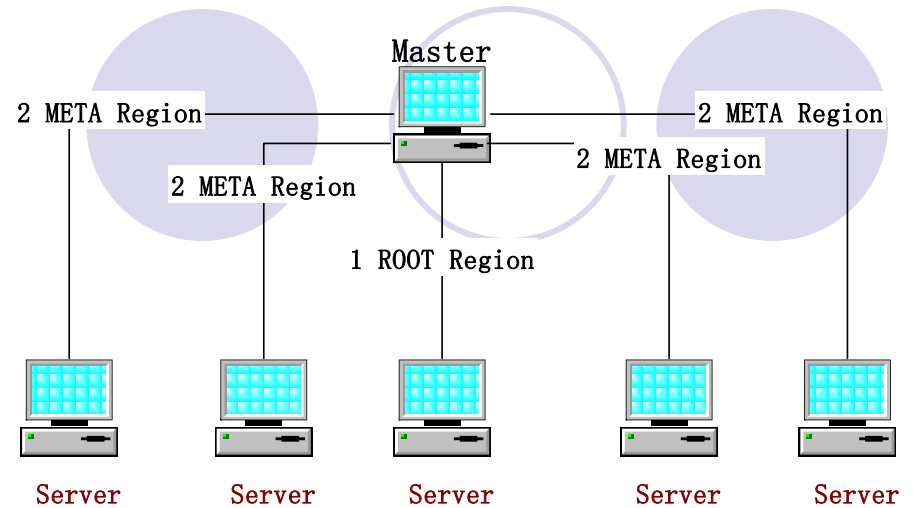
# Three major components

- The HBaseMaster
- The HRegionServer
  - Aka Tablet Server
- The HBase client



# HBaseMaster

- Assign regions to HRegionServers.
1. ROOT region locates all the META regions.
  2. META region maps a number of user regions (aka tablet regions).
  3. Assign user regions to the HRegionServers.
- Perform all read/write access
  - Monitor the health of each Server

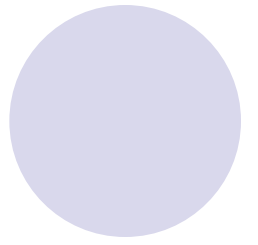
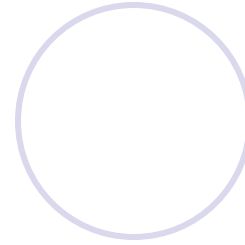
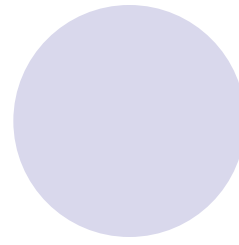
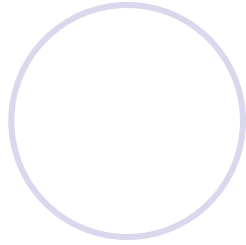
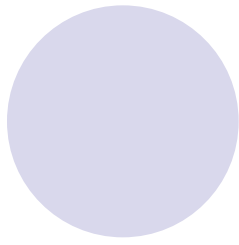






# Summary

- Column-oriented modification more flexible.
- Higher performance on row key clusters.



Thank you