

CS6350 Project – Fall 2012

Schedule:

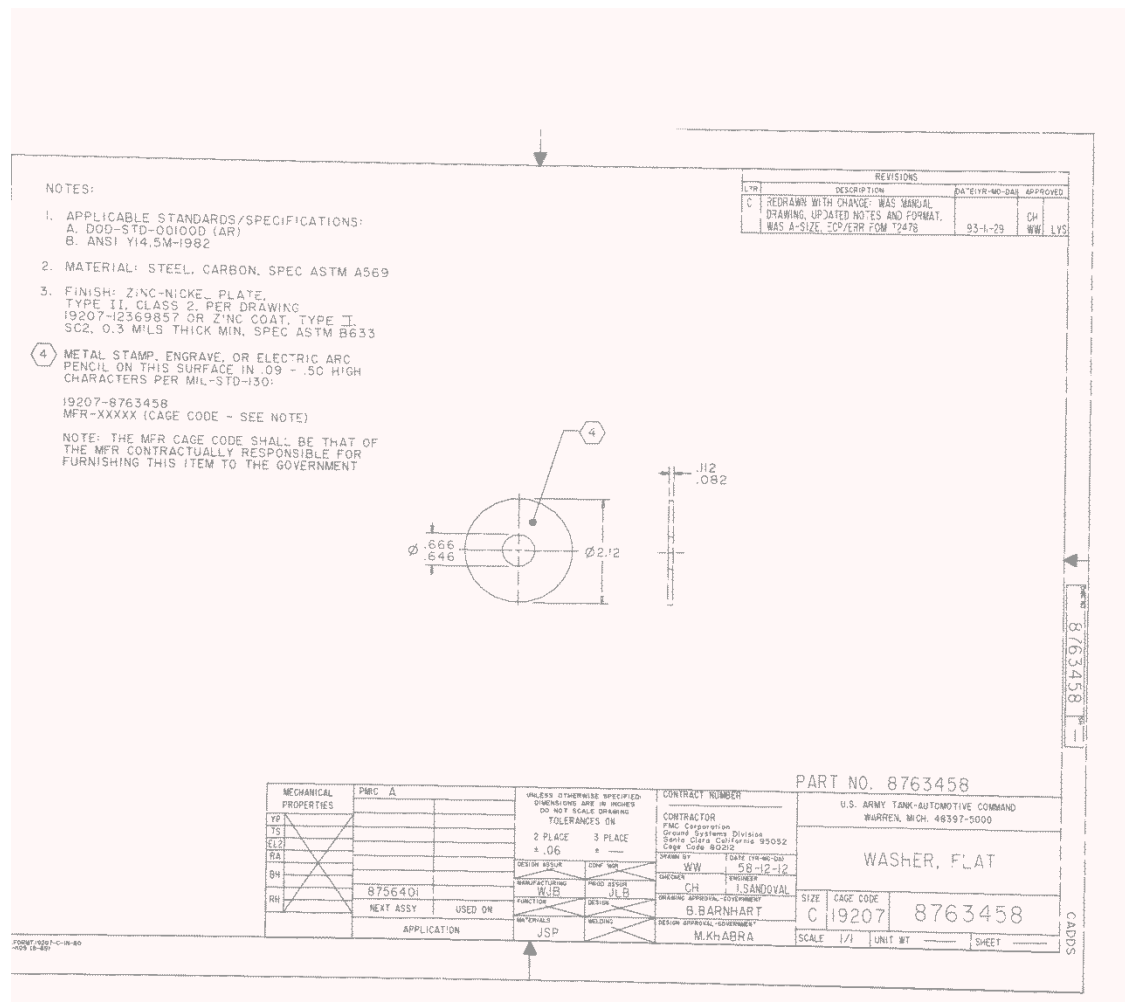
September 20, 2012: Proposal due. This is a PDF file which describes the problem to be solved, the methods to be used, and the specific goals. There should be a review of relevant literature. Use handin to submit to cs5350 P1 (i.e., handin cs5350 P1 proposal.pdf).

The goal is for you to develop a machine learning approach to solve a problem from either:

1. Engineering Drawing Analysis, or
2. Raster Map Image Analysis

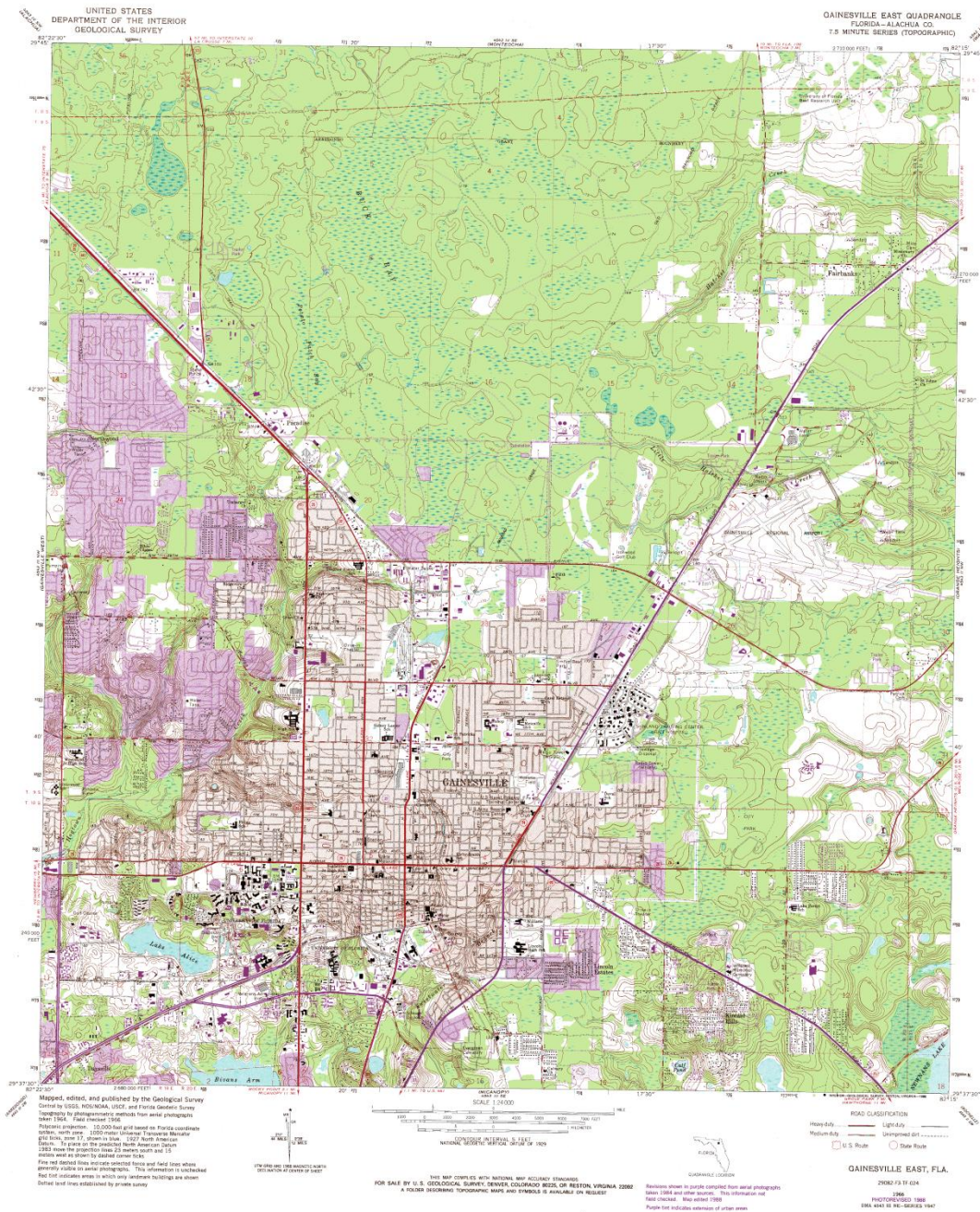
and write it up as either a paper or book chapter appropriate for submission for publication.

Engineering drawing analysis involves the automatic semantic interpretation of scanned images of engineering drawings:



This involves text extraction and interpretation, dimension set analysis, graphics extraction, etc.

Raster map image analysis involves the automatic semantic interpretation of images like:



In this case, it is necessary to extract roads, road types, road intersections, waterways, elevation lines, land types, etc.